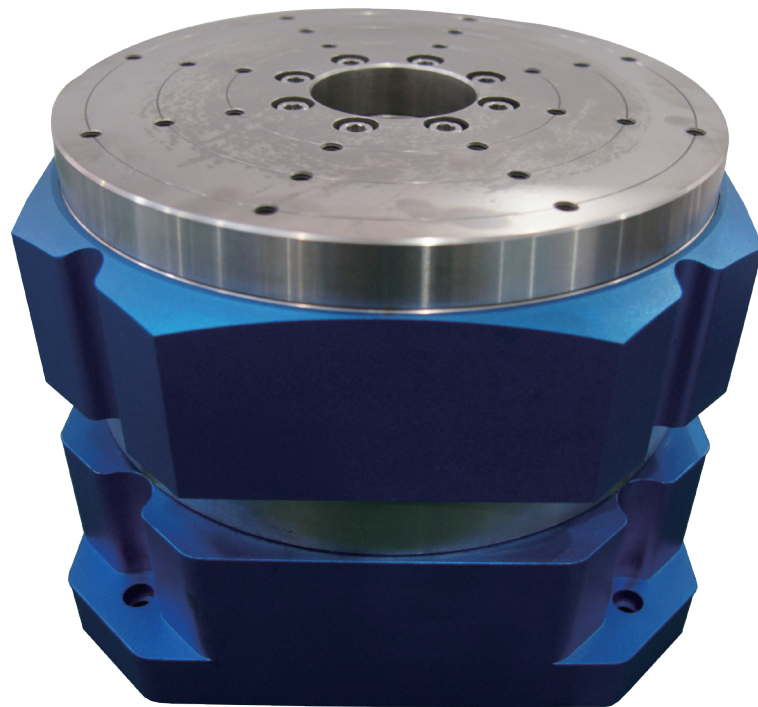


## RT SERIES

## AIR FLOAT ROTARY TABLE

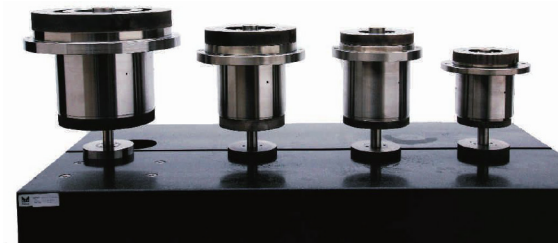
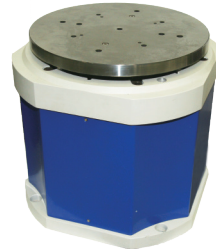
Equipped for optical inspection equipment, high-precision measuring instruments, high-precision drilling machines, laser processing and other large high-precision measurements



## POWERFUL AND STABLE AS A MOUNTAIN

Maximum air float main axis load up to  
**2000Kg**

Automatic/manual available



### PRODUCT FEASTURE

- High speed (up to 12,000 rpm)
- High accuracy (axial and radial accuracy 0.05 micron)
- Large load capacity (5kg – 2000kg)
- Various ranges of worktable,  $\phi$  100 200 300...2000
- No friction, no wear
- Low noise, no pollution
- Long life, easy maintenance

### APPLICATION FIELD

- Analog magnetic sensor calibration
- Gyroscope calibration
- Device motion simulation
- Acceleration test
- Optical measurement
- Other precision instrument applications

### TECHNICAL PARAMETERS

Item	Product Model		
	RT100	RT200	RT300
Main application	Mainly used on measuring equipment where high precision angle detection is required (manual measurement)		
Main axis radial error	$(\pm 40 + 0.3H)nm$ ※	$(\pm 30 + 0.3H)nm$	$(\pm 20 + 0.3H)nm$
Main axis axial error	$(\pm 50 + 0.6X)nm$ ※	$(\pm 35 + 0.6X)nm$	$(\pm 30 + 0.6X)nm$
Load capacity	15kg、25kg、50kg、120kg、200kg、300kg、600kg、1000kg、1500kg、2000kg		
Worktable diameter	110mm、150mm、220mm、280mm、320mm 500mm、1000mm、1200mm (customizable)		
Rotation way	Auto/manual		
High precision rotary coding	accuracy: $\pm 0.15''$ 、 $\pm 0.25''$ 、 $\pm 0.5''$ 、 $\pm 1''$ 、 $\pm 1.5''$ 、 $\pm 2''$		
3D adjust table	X direction adjustment distance 0–4mm, adjustment slope ratio: 150:3		
	Y direction adjustment distance 0–4mm, adjustment slope ratio: 150:3		
Manual fine tuning device	Minimum adjustment angle $0.01''$ (optional)		

※ H: measuring height from worktable  
X: measuring radius